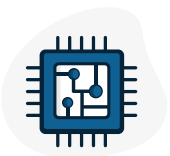


# LOOKING INTO RFID?

Here are 4 Key Factors to Consider.

RFID is one of the most innovative tracking technologies available and is growing in popularity, with over 1/3 of organizations seeking to implement it by 2024. Before you start, consider four basic guidelines to avoid common problems that can impact RFID performance.

## DON'T



**1** Pair active tags with individual low-cost inventory



**2** Tag metal assets or items near liquid or high carbon content without proper tag design



**3** Store tags in high-humidity areas



**4** Deploy the system in highly conductive areas

## KEEP AN EYE OUT FOR COMMON RFID DISRUPTORS

Identify disruptors early on to design an ideal RFID solution for your environment.



METAL



DISPARATE RADIO-FREQUENCY WAVES



FLUORESCENTS



MATERIALS WITH HIGH CARBON CONTENT



LIQUIDS

## NOT SURE IF RFID WILL WORK IN YOUR FACILITY?

Talk to one of our RFID experts today for a free assessment of your space.



rmsomega.com | (888) 857-8402 | info@rmsomega.com

