

# LABELVIEW

Add a powerful, easy-to-use barcode label design application to your company's business process that can be used by anyone from beginners to advanced users. LABELVIEW is a sophisticated and intuitive barcode and label design software. With the stability of LABELVIEW's updated platform, you will have the confidence that your software will be dependable today and in the future.

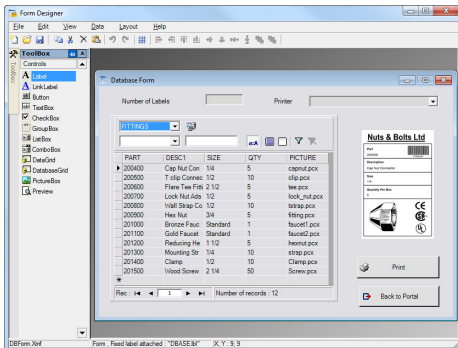
TEKLYNX Subscription Licensing is available for LABELVIEW. Subscription Licensing is the best option for maximum flexibility and long term value. The upfront cost of a LABELVIEW subscription license is lower, and it includes more value than ever before.

- Get upgrades on time, without spending extra time or money.
- Easily predict software costs for simplified and predictable budgeting.
- Take advantage of unlimited access to software maintenance and technical support.

## Why Use LABELVIEW?

- **Easy to Use** – Intuitive interface allows users to quickly become comfortable and efficient using the application.
- **Powerful** – 40+ barcode symbologies allow you to easily comply with industry standards.
- **Language Support** – LABELVIEW supports 25 languages within its interface and has the ability to print virtually any language.
- **Reliable** – Updated application platform makes LABELVIEW extremely stable.

## How can LABELVIEW Help Solve Your Business Issues?



Form Designer

- **Reduce Time Spent Designing Labels** – LABELVIEW allows you to create labels quickly using wizards, which reduces the overall time spent from initial label design to print time.
- **Reduce Errors** – Form Designer gives you the ability to create custom forms for accurate data entry. LABELVIEW's updated printing interface allows you to preview the label prior to printing, which acts as the final step in quality control.
- **Increase Productivity** – LABELVIEW's redesigned interface, coupled with simplified database connections and streamlined data entry, allows you to design labels and print them in a much shorter period of time.
- **Allows for Easy Entry into Enterprise Printing Solutions** – As your label business grows, you can easily expand your labeling solution. LABELVIEW allows you to transition to TEKLYNX' enterprise products.

## Features & Enhancements in LABELVIEW

- Data Sources Categories
- Network Licensing Tolerance
- Layers Feature
- Form Designer
- Windows 8.1 Compatible
- Additional Activation Options
- Label Conversion Tool



United States  
1-414-837-4800

France  
33-562-601-080

Germany  
49-2103-2526-0

Singapore  
65-6908-0960



Copyright 2014 Teklynx Newco SAS. All rights reserved. Printed in USA 02/14. TEKLYNX is a registered trademark of Teklynx Newco SAS. All other brands and product names are the trademarks of their respective owners.

[www.teklynx.com/labelview](http://www.teklynx.com/labelview)

