

# TracerPlus™ Desktop

## For Application Development



### Ease of Use

TracerPlus Desktop software is a free design tool for creating and configuring mobile applications for specific mobile data collection purposes. Common uses include asset tracking, inventory, field inspections, event management, mobile sales, route accounting and equipment maintenance. TracerPlus Desktop enables users to seamlessly install the TracerPlus mobile client to connected Windows Mobile/CE devices and then quickly deploy these custom created applications to those devices. The user interface of Tracerplus Desktop provides an intuitive way to develop simple, straightforward mobile applications with a high level of control and detail. TracerPlus provides the ability to create applications to both IT professionals and non-programmers alike at a uniquely cost-effective price.

### Flexibility

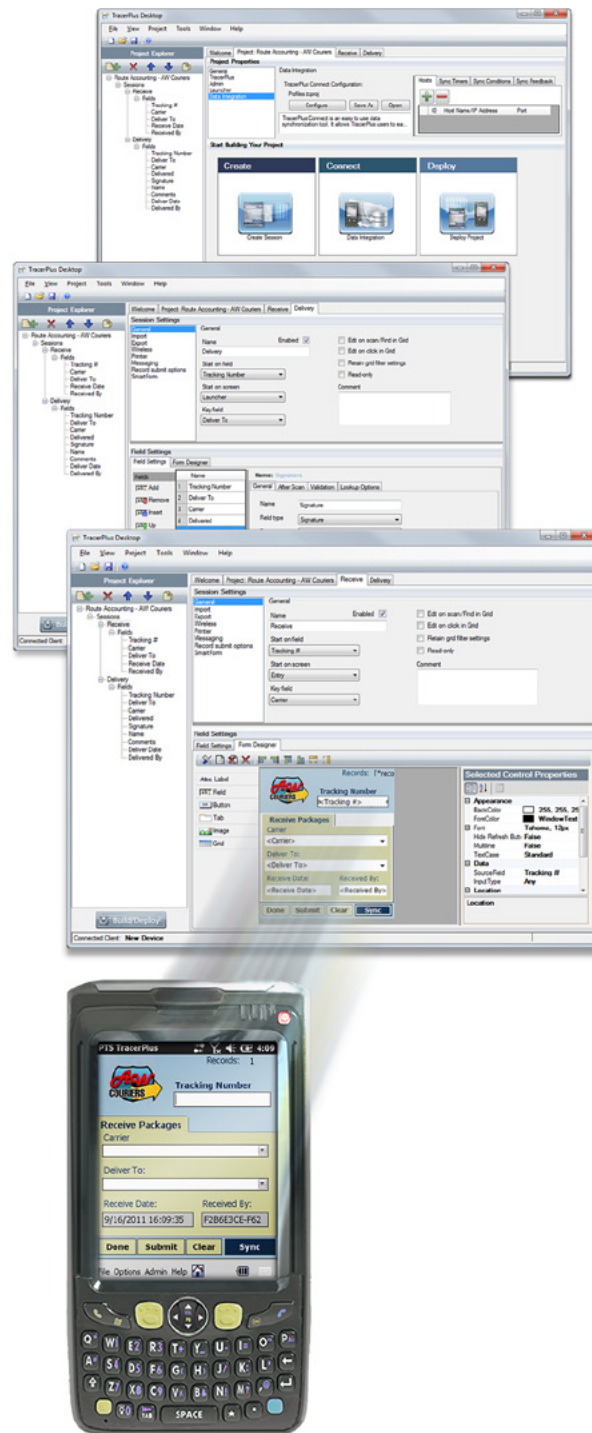
Users can configure individual field type settings, lookup and calculation options, flexible after-scan directives and set up multiple validation criteria. In addition to Project, Session and Field settings, TracerPlus Desktop includes a drag and drop form designer that allows the user to create a unique and intuitive form with a custom look and feel. With a licensing model based on a one time per device cost for the mobile client, users can deploy multiple applications to a single device; enabling the efficient and cost effective use of mobile applications across multiple departments.

### Accessibility

Combining the free TracerPlus Desktop design software with the availability of a trial version of the mobile client, TracerPlus provides businesses the opportunity to explore and experiment risk free. The ability to easily export and share applications between users enables both collaboration and easy distribution. In addition, TracerPlus Desktop provides free access to and direct importing from the TracerPlus Solution Center at [www.tracerplus.com](http://www.tracerplus.com). The Solution Center features a growing collection of pre-configured quick-start applications that can be imported and used or customized to meet individual needs.

### Scalability

Applications created in TracerPlus Desktop can be tailored to enable both small and large scale mobile data collection operations. With the ability to quickly adjust settings on-the-fly and re-deploy, TracerPlus can grow as businesses grow. With its flexibility and a feature set strong enough to satisfy the most demanding developer, TracerPlus Desktop brings the accuracy and labor-saving advantages of direct-to-database mobile data collection to companies of all sizes and budgets



[www.tracerplus.com/desktop](http://www.tracerplus.com/desktop)

[www.tracerplus.com](http://www.tracerplus.com) • [sales@tracerplus.com](mailto:sales@tracerplus.com)

Portable Technology Solutions • 221 David Court • Calverton, NY 11933 • US Toll-Free: 877-640-4152 • 631-727-8084

## Advanced Mobile Application Development

- Extensive design control for up to 32 custom mobile applications.
- Graphical Form Designer: Precise and intuitive mobile form user interface (UI) design tools.
- Project Settings: Set barcode, RFID, Admin and other global application settings.
- Session Settings: Configure settings for each mobile form within a given application.
- Field Settings: Control individual behaviors and validation settings for data fields within a form.

## Extensive Form Design Control

- Customize form size to match any device screen.
- Insert custom images or company logos.
- Select and place fields, labels, buttons, data grids and other controls via drag and drop.
- Assign over 30 different of actions to form buttons including submit, wireless sync to database, open 3rd party app, scan, RFID tag read or write, refresh, open virtual keyboard and launch camera.
- Choose fonts, font styles and font size for improved display on handhelds, kiosks or vehicle mounted devices.
- Easily and precisely create professional forms with alignment and spacing controls.
- Select custom colors for background, tabs, fields and buttons.
- Add customizable grid controls for viewing record data within the entry form; allowing for quick access to TracerPlus data in a sortable and filterable grid.
- Confirm/adjust source field, field type and other settings in the properties grid without leaving the designer.

## Project (Application) Settings

- Project Explorer user interface tools
  - Quick view of project layout in expandable tree format.
  - Add new sessions, move session order.
  - Duplicate sessions to speed configurations of similar forms.
- Set name and save location for projects.
- Set database file location on the device including storage card.
- Turn barcode and/or RFID scanning capabilities on or off.
- Enable PDA full screen mode to increase form real estate.
- Set passwords to restrict access to certain features and add logins to create user level restrictions the mobile application.
- Create different privileges for individual users including access to specific electronic forms.
- Configure inactivity time-out with user login requirements.
- Set host info, sync timers and conditions and sync feedback for TracerPlus Connect integration.
- Access TracerPlus Connect Sync Projects through built-in configuration settings.

## Session (Electronic Form) Settings

- Set application start screen and “start on” field for each form.
- Control which fields are included in an export file.
- Create instructions for mobile printer, e-mails and SMS alerts.

## Field (Individual Data) Settings

- Set visibility and read-only options.
- Select the Data Type, including general, number and customizable date/time.
- Configure after-scan settings including auto-submit, go-to field on scan and auto-find on scan.
- Automate data entry and share data between sessions with lookups.
- Control validation settings to prevent data errors. Includes unique checking, must match data types, min/max values.
- Customize validation error messages with supported custom sounds.
- Configurable go-to field on validation errors.
- Choose from a variety of field types:
  - Text
  - Dropdown
  - Checkbox
  - Variable
  - Signature
  - Image
  - Calculated

## Fast Deployment to Mobile Devices

- Built-in TracerPlus mobile client installer.
- Deploy to a connected TracerPlus enabled device in a few clicks.
- Easy to deploy to test applications, then adjust and re-deploy.
- TracerPlus mobile client installer is included.
- Register and manage client licences with built-in **Client Manager**.

## TracerPlus.com Solution Center and Application Sharing

- Search for pre-configured applications via the search project feature.
- Import pre-configured applications from [www.tracerplus.com](http://www.tracerplus.com) directly into TracerPlus Desktop.
- Use free online applications as a template for customization or deploy directly to mobile devices.
- Export TracerPlus Desktop projects as individual files (Build) or encapsulate as a single export file for easy sharing (.tpe file type).
- Import existing TracerPlus projects into TracerPlus Desktop for editing and re-deployment (v.5 and later).

## System Requirements:

- Windows 2000 / XP / Vista / 7
- 20 MB free disk space
- ActiveSync version 3.5 or higher (2000 / XP)
- Windows Mobile Device Center (Vista / 7).

## Required for Application Deployment:

- Mobile device running one of the following operating systems:
  - Windows Embedded Handheld
  - Windows Mobile
  - Windows CE/CE.Net
  - PocketPC
- A trial or registered copy of the TracerPlus mobile client running the same TracerPlus version number.