



RMSOMEGA
TECHNOLOGIES

Improving Outcomes
Strategic Technology Solutions

SmartPass Temperature Sensor Floor Stand Assembly Instructions

CONGRATULATIONS!



Congratulations on purchasing RMS Omega's SmartPass temperature monitoring solution. Let's begin by setting up your stand.

Follow these instructions to put the floor stand and Smart Pass Kiosk together.

For the latest software download and resources, please visit rmsomega.com/smartpass or scan the QR code to the right.

For questions, please send us an email at helpdesk@rmsomega.com.



Required Tools:

1. Standard Philips screwdriver
2. Marker
3. Wire cutter
4. Ruler or tape measure
5. Hammer or pipe wrench

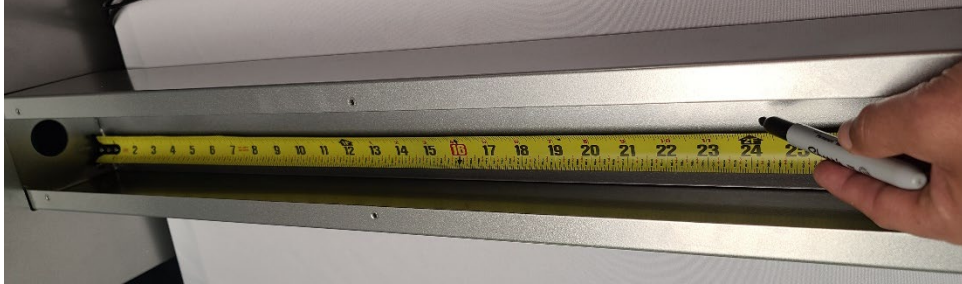


Step 1:



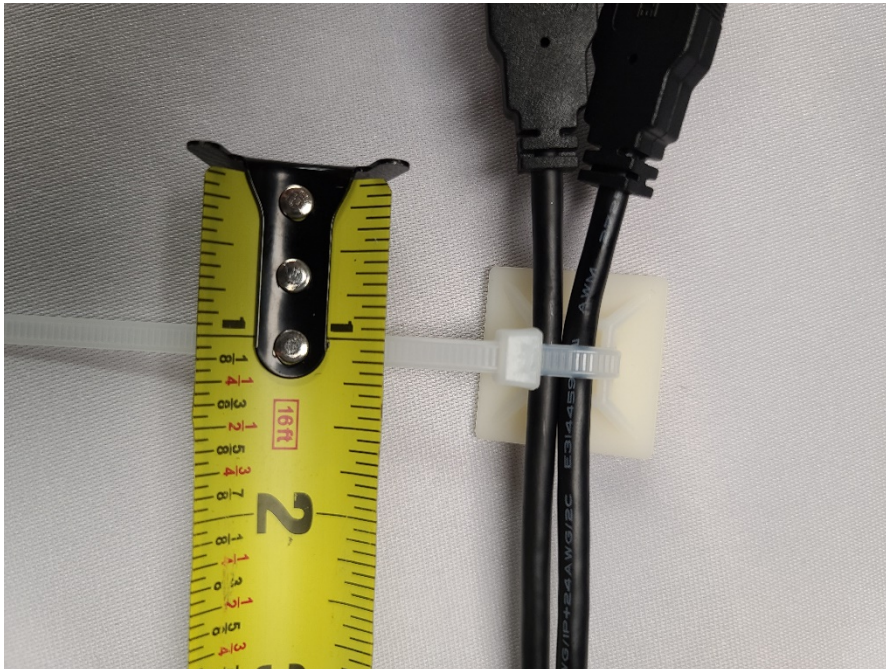
Find the side of the stand with 8 screws. Lie the stand down with that side face up and remove the screws. Then, remove the top panel and place it to the side.

Step 2:



Measure the 2 feet up from the base and make a small mark.

Step 3:

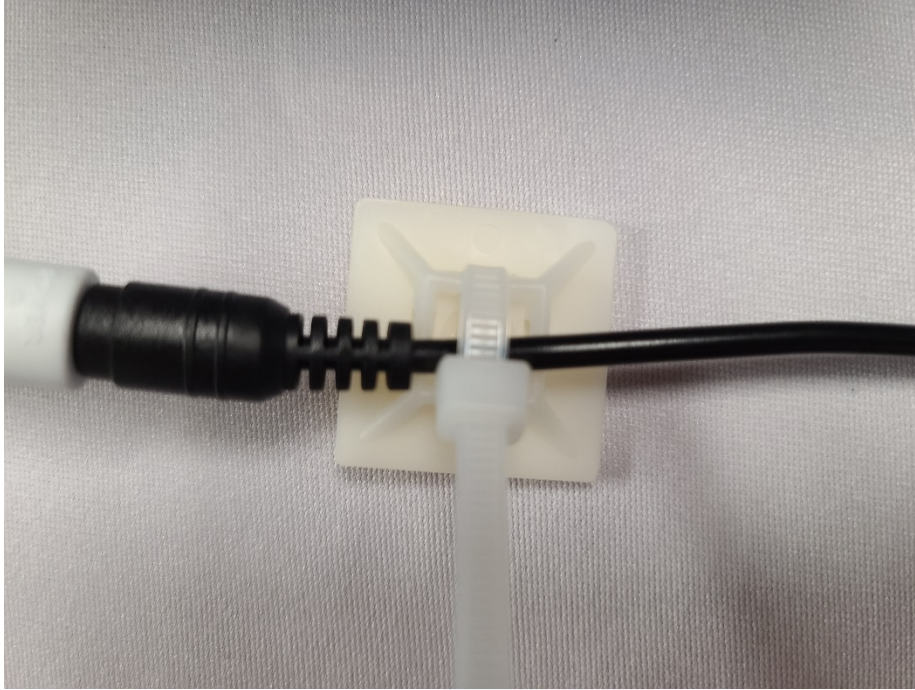


Take 2 USB cords. Take the male end (see below) of both cords and tie them together using a zip tie and cable mounting pad. Leave about 1 inch of space. (See illustration to the left.) Cut excess zip tie.

(male end)



Step 4:



In another zip tie and cable mounting pad, secure the male end of the power cord. Cut excess zip tie.

Step 5:



Peel backing off the cable mounting pad.



Stick both the cable tie mounting pads from Step 3 and Step 4 on either side of the 2-foot mark made in step 2. Make sure the male ends of the USB and Power cords are facing the top end of the Kiosk stand.

Step 6:



Wrap up the excess cords nicely and tie up at the bottom with a zip tie and cable tie mounting pad. Then put the excess (1-2 inch) cords through the hole in the base.

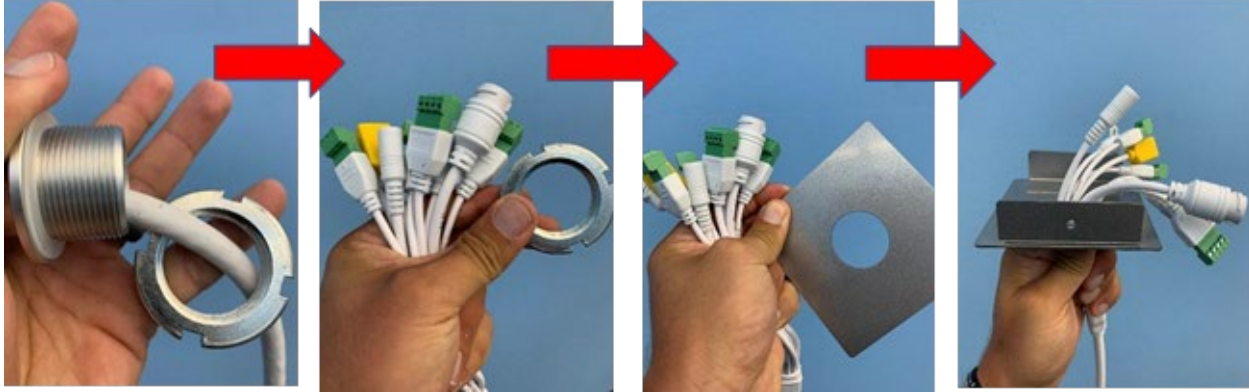
Step 7:



Time to unbox and mount the Kiosk. Remove the threaded bolt off the SmartPass terminal.



Step 8:



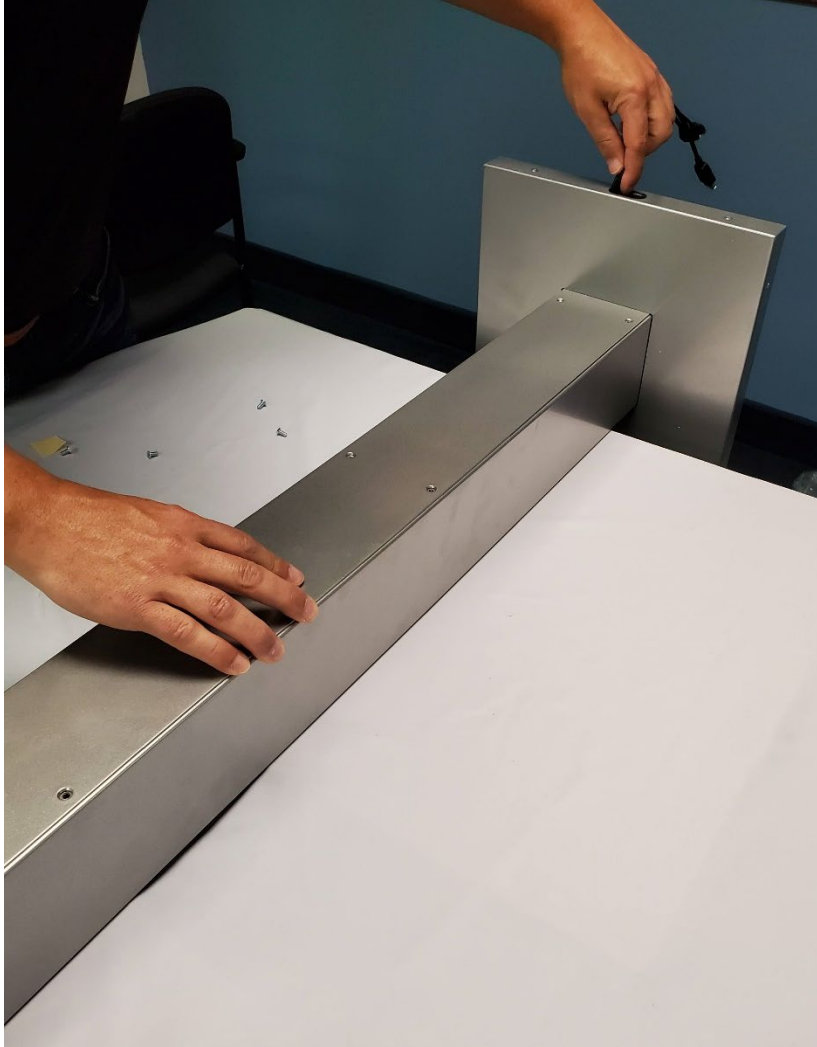
Feed the white cable connectors, two at a time, through the top hole of the Kiosk stand.

Feed the white connectors through the threaded bolt two at a time and slide up to the male end of the kiosk pole and hand tighten.

Tighten the bolt with pliers or with a tap of the screw driver and hammer in a counterclockwise direction.



Step 9:



Slide the top panel back into the base, add and secure the screws. Please be careful not to pinch the USB cables and the power cable.



And congratulations, your SmartPass temperature monitoring solution is ready to use!