

MOBILE COMPUTERS

Product Group Guide



MOBILE COMPUTERS

Datalogic's mobile computer product line offers a wide range of devices suitable for any kind of indoor or outdoor application. Ranging from full touch devices to keyboard devices, the Datalogic portfolio provides state-of-the-art technology and features such as wireless charging, the latest Android™ operating system and high performance scan engines.

Datalogic mobile computers are available in different form factors, display sizes, keyboard combinations and operating systems to meet the most advanced needs of our customers.



RETAIL



- Inventory; Mark-downs
- Shelf replenishment
- Price verification
- Assisted sales
- Self-shopping; Queue-busting
- mPOS (mobile POS)
- Picking; Put away
- Shipping & Receiving
- Cross docking



MANUFACTURING



- Quality control
- Inventory
- Warehousing
- Asset tracking

TECHNOLOGIES

- 1D and 2D scanners
- Android and Windows Operating Systems
- Rugged enclosures
- High definition color displays
- Smart Charging Docks
- Multi-Core chipsets
- Automatic staging, configuration and management software tools
- Full connectivity options for indoor and outdoor



T&L



- Picking and Receiving
- Cross docking
- Warehousing
- Inventory
- Field applications

HEALTHCARE



- Bedside point of care
- Pharmacy
- Inventory
- Patient management
- Specimen collection

HANDHELD COMPUTERS

NEW

JOYA™ TOUCH 22



The Joya™ Touch 22 is the ultimate self-shopping companion. It has enhanced self-scanning capabilities allowing consumers to scan and pack items faster, leading to queue busting at the checkout while offering a comfortable and unique shopping experience.

APPLICATIONS

Retail
Manufacturing
Transportation & Logistics
Healthcare

X
X
X
-

FEATURES

Operating System

Android 11

CPU, Processor

Qualcomm® SDA660 System-on-Chip 2.2 GHz

Memory: RAM / ROM

System RAM: 4 GB; System Flash: 32 GB

Display

4.3 inch full touch TFT-LCD color display;
FWVGA: 854 x 480 pixels; 16M colors, LED backlight

1D/Linear Codes/2D Codes/2D Imager

X

Wireless Charging

X

COMMUNICATIONS

Local Wireless Radio
(Wi-Fi, Bluetooth®)

IEEE 802.11 a/b/g/n/ac and 802.11 d/e/h/i/k/r/v/w/mc (for indoor localization); IPv4, IPv6
Bluetooth® v5.1 with BR/EDR and BLE

Wireless Wide Area Network (WWAN)

-

Wired Communications

USB-C: High Speed USB 2.0

OPTIONS

Keypad / Keyboard Options

Fully programmable key

Camera

Black & White image capture via scanner

Voice Capability

VoiP

RUGGEDNESS / DURABILITY

IP Rating

-

Drop to Concrete

1.2 m / 4.0 ft

Operating Temperature

-10 to 50 °C / 14 to 122 °F

Weight

Handheld: 285 g / 10.1 oz;
Pistol-Grip: 317 g / 11.2 oz

NEW

MEMOR™ 11



The Memor 11 mobile computer comes with enhanced processing capabilities, up-to-date operating system, and superior scanning performance. Built for a versatile mobile workforce to meet the needs of the most common retail, warehouse, manufacturing, and transportation & logistics applications.

MEMOR™ K



The Memor™ K mobile computer is the perfect pocketable business companion with a 4 inch display and a 2 GHz octa-core processor. Featuring Android 9 and 3 GB of memory, the light weight, thin design and backlit numeric keyboard provide for an entry level mobile computer.

X
X
X
X

X
X
X
X

Google Android 11 with Google Mobile Services (upgradeable to Android 13)

Google Android 9 (Pie)

2 GHz Octa-core

2.2 GHz Octa-core

System RAM: 4 GB;
eMMC Flash: 32 GB

System RAM: 3 GB;
eMMC Flash: 32 GB

5 inch IPS HD resolution 720 x 1280;
LED backlight;
Touch Screen: 5 points multi-touch capacitive panel with Dragontrail hardened glass

4 inch WVGA resolution 800 x 480; LED backlight;
Touch Screen: 5 points multi-touch capacitive panel with Dragontrail hardened glass

X

X

X

-

Bluetooth® V5.0, Low Energy (BLE) Support

IEEE 802.11 a/b/g/n/ac/d/e/i/w; Bluetooth v5 (Classic Bluetooth wireless technology and BLE)

LTE-Advanced/4G+; Cat 6

-

USB-C: High Speed USB 2.0 Host and Client

USB-C: High Speed USB 2.0 OTG

Two (2) side scan keys; Power On/Off; Volume Up/Down; Three (3) user programmable Android™ keys

Backlight 24 keys rubber keyboard, plus two side scan keys and two programmable side keys

Resolution: 13 megapixel;
Illumination: User controllable LED flash;
Lens: Auto focus

Resolution: 8 MP; Illumination: LED flash; Lens: Auto focus

-

IP65

IP54

1.5m / 5ft

1.2 m / 4 ft to concrete;
1.5 m / 5 ft to concrete (with rubber boot)


-20 to 50 °C / -4 to 122 °F

-20 to 50 °C / -4 to 122 °F




285.0 g / 10.0 oz

268 g / 9.4 oz (with battery)

HANDHELD COMPUTERS

	SKORPIO™ X4	SKORPIO™ X5*
	 <p>The Skorpio™ X4 mobile computer features a high performance architecture that offers blazing speed for legacy applications while providing an easy migration path to Android™.</p>	 <p>The Skorpio™ X5 mobile computer is rugged enough to face the toughest Enterprise challenges. Featuring Google OS Android™ 10 with GMS, the Skorpio X5 is designed for the harshest environments and has a wireless charging option.</p>
APPLICATIONS		
<i>Retail</i>	X	X
<i>Manufacturing</i>	X	X
<i>Transportation & Logistics</i>	X	X
<i>Healthcare</i>	X	X
FEATURES		
<i>Operating System</i>	Windows Embedded Compact 7 / Android v4.4	Google Android 10 with Google Mobile Services (GMS) and Android Enterprise Recommended (AER)
<i>CPU, Processor</i>	TI OMAP4 @ 1 GHz	Qualcomm SD660 Octa-core 2.2 GHz
<i>Memory: RAM / ROM</i>	RAM: 1 GB; Flash: 8 GB	RAM: 3 / 4 GB; Flash: 32 / 64 GB
<i>Display</i>	Transflective TFT / LCD, QVGA 240 x 320 px; 3.2 in diagonal	4.3 inch TFT / Transflective LCD with 800 x 480 WVGA pixel resolution; LED backlight and integrated touch screen
<i>1D/Linear Codes/2D Codes/2D Imager</i>	X	X Including new 2D Mid Range and new near-far Extra Long Range (XLR)
<i>Wireless Charging</i>		X
COMMUNICATIONS		
<i>Local Wireless Radio (Wi-Fi, Bluetooth®)</i>	TI Wi-Link 8, IEEE 802.11 a/b/g/n; Bluetooth® v4 w/BLE (Android models); Bluetooth® v2.1 + EDR (WEC7 models); MIMO	IEEE 802.11 a/b/g/n/ac and 802.11 d/e/h/i/k/r/v/w/mc IPv4, IPv6, 2x2 MU-MIMO for higher throughput and coverage Class 2, Bluetooth V5.0, NFC
<i>Wireless Wide Area Network (WWAN)</i>		
<i>Wired Communications</i>	RS-232; USB; Ethernet	USB Type-C: USB 3.1 gen 1 Gigabit Ethernet connectivity (on 3 Slot docks dedicated to contact charging devices)
OPTIONS		
<i>Keypad / Keyboard Options</i>	50-key full alphanumeric, 38-key functional; 28-key numeric keyboard	47-key full alphanumeric, 38-key functional; 28-key numeric keyboard
<i>Camera</i>		Rear Camera 13 MP
<i>Voice Capability</i>		VoIP
RUGGEDNESS / DURABILITY		
<i>IP Rating</i>	IP64	IP65
<i>Drop to Concrete</i>	1.8 m / 6.0 ft	1.8 m / 6.0 ft
<i>Operating Temperature</i>	-10 to 50 °C / 14 to 122 °F	-20 to 50 °C / -4 to 122 °F
<i>Weight</i>	Handheld (w/stan. battery): 388 g / 13.7 oz Pistol grip (w/stan. battery): 482 g / 17.0 oz	Handheld (w/stan. battery): 488 g / 17.2 oz Pistol grip (w/stan. battery): 600 g / 21.1 oz XLR with pistol grip and high capacity battery: 665 g

*not all Skorpio X5 features are available on all device versions

VEHICLE MOUNT COMPUTERS		
FALCON™ X4	RHINO II™ VEHICLE MOUNT COMPUTER	BLACKLINE SH15 / SH21
 <p>The Falcon™ X4 mobile computer features a high performance multi-core 1 GHz architecture that offers blazing speed when running Windows Embedded Compact OS and is easily upgradeable to the Android™ OS.</p>	 <p>The Rhino II™ vehicle mount computers, available in both 10" and 12" display sizes, sets the standard for ruggedness in the warehouse. Rhino II offers a choice of WES 7, Windows 10 IoT Enterprise or Android 7.1 operating systems.</p>	 <p>The SH15 Blackline computer is a 15 inch rugged vehicle mount computer (VMC) as well as a fixed mount unit. The SH21 Blackline computer is a 21 inch industrial computer. Both are used for any industrial application.</p>
X X X X	X X X X	- X X -
Windows Embedded Compact 7 / Android v4.4	Windows Embedded Standard 7, Windows 10 IoT Enterprise 64 bit, Android 7.1	Windows Embedded Standard 7 or Windows 10 IoT Enterprise 64 bit
TI OMAP4 @ 1 GHz	Proc. ARM 4 x 1.0 GHz; Proc. Intel E3826 2 x 1.46 GHz	Intel Atom E3845 Quad Core 1.91 GHz; Intel i5-5350U Dual Core 1.8 GHz
RAM: 1 GB; Flash: 8 GB	RAM: 1/2 Gb (Arm), 4 GB (Intel) Storage: 32 GB CFAST/SD Card	RAM: 4 GB (Quad Core); 16 GB (i5) Storage: 32 GB CFAST/SD Card
Transflective TFT / LCD, QVGA 240 x 320 px; 3.5 in diagonal	Freezer Model: 10.4 inch SVGA 800 x 600, 400 NITS; Standard Model: 10.4 inch XGA 1024 x 768, 350 NITS 12.1 inch XGA, 1024 x 768, 500 NITS	SH15 XGA 1024 x 768, 400 NITS SH21 FHD 1920 x 1080, 350 NITS
X	-	-
	-	-
TI Wi-Link 8, IEEE 802.11 a/b/g/n; Bluetooth® v4 / BLE (Android models); Bluetooth® v2.1 + EDR (WEC7 models); MIMO	Wi-Fi 802.11 a/b/g/n (2.4 & 5 GHz); Cisco CCX v4; Bluetooth® v4.0	Wi-Fi 802.11 a/b/g/n (2.4 & 5 GHz); Cisco CCX v4; Bluetooth® v4.0
	Optional	-
USB; RS-232; Ethernet	Ethernet; USB; RS-232 (5 and 12 V)	Ethernet; USB; RS-232 (5 and 12 V)
29-Key (also in functional version); 52-Key	4 programmable keys; Customizable Software Keyboards	4 programmable keys; Customizable Software Keyboards
	-	-
	-	-
IP65 1.8 m / 6.0 ft	IP65 / IP67 -	IP65 / IP67 -
-20 to 50 °C / -4 to 122 °F	Standard Model: -20 to 50 °C / -4 to 122 °F Freezer Model: -30 to 50 °C / -22 to 122 °F	-20 to 55 °C / -4 to 131 °F
Handheld: 602.0 g / 21.4 oz Pistol grip: 668.0 g / 23.6 oz	10 in. Freezer Model: 3.4 Kg / 7.5 lb 10 in. Standard Model: 3.6 Kg / 7.9 lb 12 in. Standard Model: 4.7 Kg / 10.4 lb	SH15: 6.5 Kg / 14.3 lbs SH21: 10.8 Kg / 23.8 lbs

COMPLEMENTARY PRODUCTS



RFID SLED

RFID SLED is a handheld device to convert the Memor 10 PDA to a UHF RFID reader. Designed to provide the best-in-class performance for quickly reading large numbers of UHF RFID tags, the 2128P reader boasts improved levels of accuracy and RFID read/write performance. All items within range are read simultaneously.



Highlights

- Provides a larger, fixed high gain antenna for up to 9 m / 29.5 ft of read range
- In-reader Tag de-duplication software
- The integrated ePop-Loq® socket allows for data and charge connections
- Flat landing contact pads, allowing for quicker docking and greater durability
- Bluetooth Version 4.2 technology
- Supports both Bluetooth Classic as well as Bluetooth Low Energy (BLE) connectivity
- Can be operated in Serial Port Profile (SPP) or Human Interface Device mode (HID)
- LED indicators on the rear side of the antenna
- Direct USB Connection for Ultra secure data gathering
- Equipped with a Micro SD socket and real-time clock
- Supports automatic re-connect mode

Applications

- Retail: In-store and Back Room Inventory, Item location, Price Checking
- Transportation & Logistics: Receiving Control, Picking, Item Tracking and Location, Air baggage tracking
- Manufacturing: Material/Finished Goods Inventory, Locating, Cycle Counting, Receiving Control, Automatic Replenishment
- Healthcare: Surgical Instrument Tracking, Sample Tracking, Blood Bag Tracking, Pharmaceutical and Laboratory Inventory



HANDSCANNER

The HandScanner is the lightest and smallest 2D wearable scanner in the market that allows workers to use both hands to pick faster and expand productivity while reducing repetitive useless motions and errors.

HandScanner can be easily paired with mobile computers, vehicle mount computers to provide workers with a full data collection solution that maximizes both efficiency and worker comfort in any application.



Highlights

- Light, small and thin with a weight of 40 gr / 1.4 oz and a footprint of 50 x 45 x 16 mm / 1.97 x 1.77 x 0.63 in
- Megapixel Optical resolution: 1280 x 960 pixels
- Comfortable hand trigger available in 3 different sizes with right / left hand options, optimum fit with variable Velcro fastener
- High transmit speeds with Bluetooth® Low Energy 4.0, 4.1, 4.2, 5.0 technology
- Up to 10,000 scans and 15 hours run time on a single charge
- Fast full recharge in only 2 hours
- Feedback for all environments: LED indicators, acoustic and haptic feedbacks
- Maximize efficiency with the intuitive bundle from Datalogic's mobile computers
- EASEOFCARE Service Plans offer a wide range of service options to protect your investment, ensuring maximum productivity and ROI

Applications

- Transportation & Logistics ~ Picking, packing, receiving, sorting, shipping; Track & tracing, Delivery/Proof of Delivery
- Manufacturing ~ Parts and assembly's traceability, Sequencing stations, Inventory management, replenishment, sorting, finished goods verification
- Retail ~ Front-end: Click and collect, in-store inventory, price checking; Back Office: Receiving, Inventory management; Warehouse: Picking, Shipping & Receiving
- Healthcare ~ Pharmaceutical and Laboratory warehouse picking and inventory, sample/blood bag tracking

SOFTWARE & TOOLS

SOFTWARE

All Datalogic CE mobile devices are pre-licensed and pre-installed with **Wavelink Avalanche®** software.

This remote device management software substantially increases productivity and lowers the Total Cost of Ownership through the centralized monitoring and control of software, firmware and configuration upgrades.

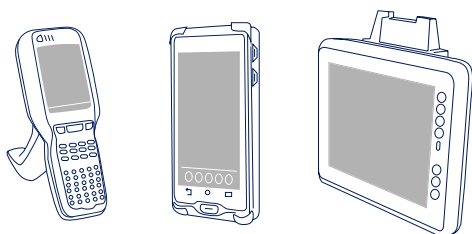


Datalogic Shield

Subscription for predictable, recurring Android software updates*:

- Includes quarterly security patches based on the Android Security Bulletins: <https://source.android.com/security/bulletin>
- Includes firmware fixes and enhancements
- Android major version (dessert) upgrades included
- Support for 2 years after device's end of sale
- 12 month transition support for prior Android versions
- Automatic customer notifications of new updates

** Subject to Datalogic Shield or Ease of Care Terms & Conditions*



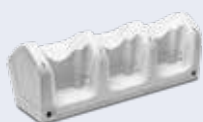
		<i>Joya Touch 22</i>	<i>Skorpio X5 Android</i>	<i>Skorpio X4 Android</i>	<i>Skorpio X4 WEC7</i>	<i>Memor 11</i>	<i>Memor K</i>	<i>Falcon X4 WEC7</i>	<i>Falcon X4 Android</i>	<i>Rhino II</i>	<i>Blackline SH15/SH21</i>
DEVELOP	Android SDK (Java, Xamarin)	X	X	X		X	X		X		
	Windows SDK				X			X		X	
	Wavelink® Studio™				X						
TERMINAL EMULATOR	Wavelink® Terminal Emulator (TE)	X	X	X	X	X	X	X		X	X
	Wavelink® Velocity	X	X	X		X	X		X		
	Wavelink® Velocity CE				X						
	StayLinked	X	X	X	X	X	X		X	X	X
DEVICE MANAGEMENT	SOTI MobiControl	X	X	X	X	X	X	X	X	X	X
	Wavelink® Avalanche™	X	X	X	X	X	X	X	X	X	X
	42Gears SureMDM	X	X	X	X	X	X	X	X	X	X
	VMWare AirWatch	X	X	X		X	X		X		
CONFIGURE	Scan2Deploy	X	X			X	X				
MISC.	Pal™ Application Suite				X			X			

ACCESSORIES

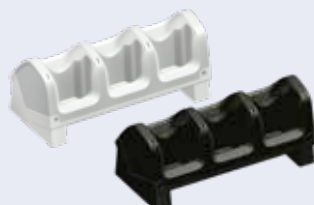


JOYA TOUCH 22 accessories

Cradles and Holders



- 91ACC0043
3-Slot Cradle-Wall Mount



- 91ACC0069 3-Slot
Cradle-General Purpose



- 91ACC0072 Single
Slot Cradle Locking



- 91ACC0073 Single Slot
Cradle Charge only

Miscellaneous



- 91ACC0047 Trolley Holder
(60 pcs)



- 91ACC0079
Rubber Boot



- 91ACC0080
Holster



- 91ACC0036
Lanyard



Memor K accessories

Base Stations/Chargers



- 94A150111 Memor K Single Slot Dock

Miscellaneous



- 94ACC0312 Memor K Belt Holster
- 94ACC0313 Memor K Rubber Boot

ACCESSORIES

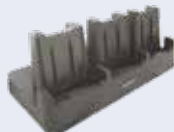


Memor 11 accessories

Base Stations/Chargers



- 94A150095
Single Slot Dock



- 94A150096
3-Slot Dock



- 94ACC0192
Battery Charger



- Ethernet Adaptors (Single:
94ACC0297 / Triple: 94ACC0288)

Miscellaneous



- 94A150097
Vehicle Dock



- 94ACC0201
Pistol Grip



- 94ACC0193
Rubber Boot



- DLR-SLED01-EU
RFID Reader Sled



Skorpio X5 accessories

Base Stations/Chargers

- 94A150106 Single Slot Dock, Wireless
- 94A150107 Single Slot Dock, Wired
- 94A150108 3 Slot Dock Wireless Light
- 94A150109 3 Slot Dock Wireless Charging Locking
- 94A150110 3 Slot Dock Wired
- 94ACC0274 Multi Battery Charger



Miscellaneous

- 94ACC0324 Screen Protector
- 94ACC0325 Attachable Pistol Grip
- 94ACC0323 Rubber Boot for HH and Gun
- 94ACC0330 Skorpio X5 XLR Belt Holster
- 94ACC0331 Skorpio X5 XLR Rubber Boot
- 94ACC0050 Belt Holster, Skorpio





© 2018-2023 Datalogic S.p.A. and/or its affiliates. • All rights reserved. Without limiting the rights under copyright, no part of this documentation may be reproduced, stored in or introduced into a retrieval system, or transmitted in any form or by any means, or for any purpose, without the express written permission of Datalogic S.p.A. and/or its affiliates. • Datalogic and the Datalogic logo are registered trademarks of Datalogic S.p.A. in many countries, including the U.S. and the E.U. • Falcon, Joya logo and Lynx are trademarks of Datalogic S.p.A. and/or its affiliates, registered in many countries, including the U.S. and the E.U. • Memor, Rhino and Skorpion are trademarks of Datalogic S.r.l. and/or its affiliates. • SH15 Blackline and SH21 Blackline are trademarks of Soredi Touch Systems GmbH. • The Bluetooth word mark and logos are trademarks owned by Bluetooth SIG, Inc. and any use of such marks by Datalogic Group companies is under license. • Android is a trademark of Google LLC. • All other trademarks and brands are property of their respective owners. • Product specifications are subject to change without notice.

PG-MOBILE-COMPUTERS-EN Revision L 20230115

www.datalogic.com