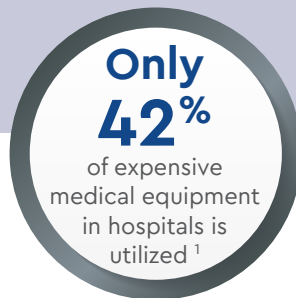


Find medical equipment quickly, helping you save time and money.



Manage medical equipment efficiently in real-time with ProSight Assets.

An insight-driven, real-time location solution (RTLS) to help you right-size equipment budgets and manage your medical equipment more efficiently.



A more efficient way to manage medical equipment.

Studies show that average utilization of expensive medical equipment is 42% and a nurse can spend up to one hour per shift looking for medical equipment. ProSight Assets helps tackle these problems by giving you the visibility to find equipment in real-time – by floor, department, asset type or equipment status – which can lead to reducing the time and stress of equipment management in your facility. ProSight Assets enables hospitals to right size inventory by utilizing accurate, real-time data to better understand how your equipment is being utilized, helping facilities reduce unnecessary equipment purchases and rentals.

Discover How ProSight Assets May Help Your Organization



Reduce time looking for equipment



Improve asset utilization



Order smarter and right-size inventory



Reduce stockouts



Integrate seamlessly with other healthcare IT systems

What is the ROI of RTLS in Healthcare?

It costs between **\$4-\$5,000** per bed per annum in lost/stolen equipment.



For a 400 bed hospital that is a **\$1.6 million** problem.

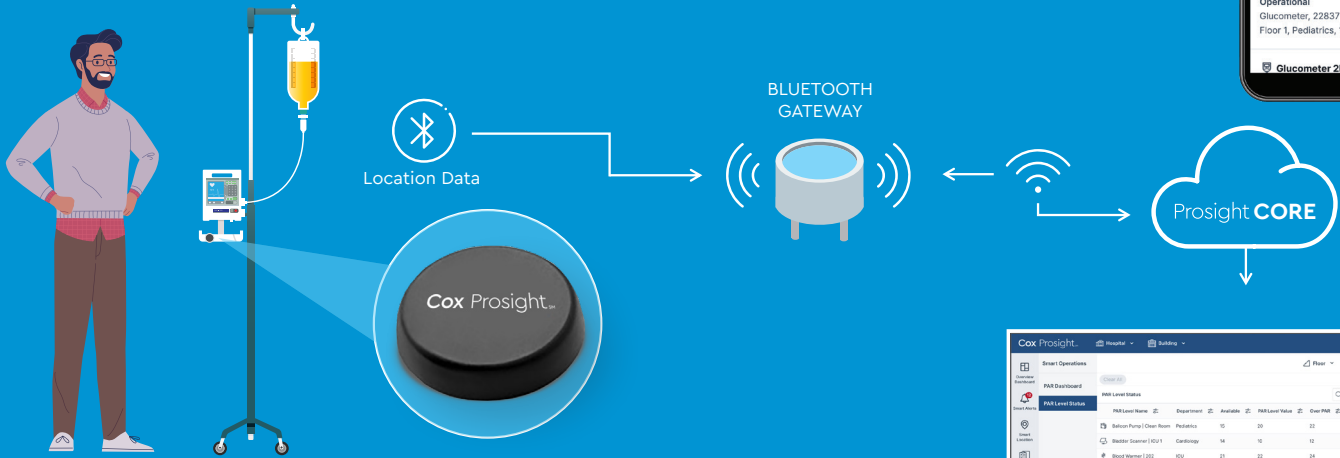
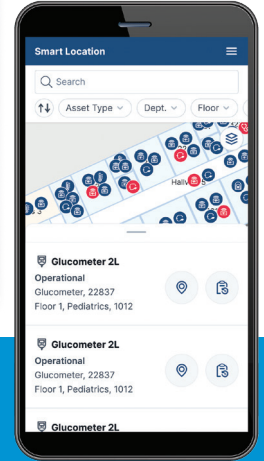
Sources: <https://visual.ly/community/Infographics/technology/what-roi-or-rtls-healthcare>
 1: <https://www.healthcarefinancenews.com/blog/mobile-asset-management-hospital-depth-discussion-ge-healthcare>
 2: <https://www.nursingtimes.net/archive/nurses-waste-an-hour-a-shift-finding-equipment-10-02-2009/>

PROSIGHT ASSETS

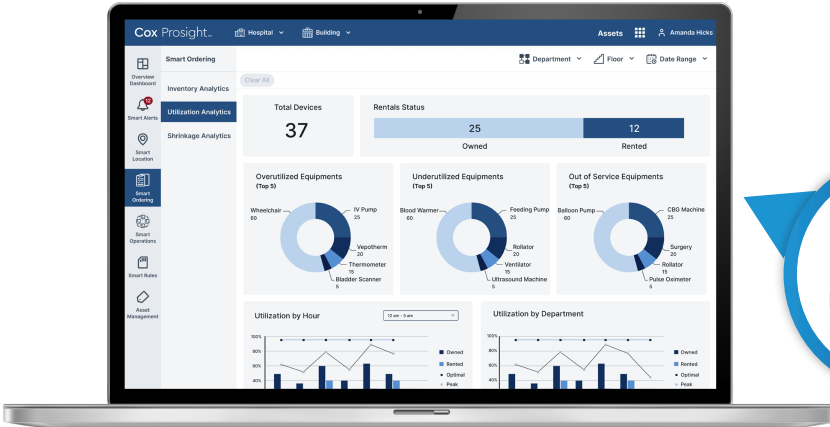
Real-Time Location Solution: Asset Tracking

HOW IT WORKS:

- Tag equipment to be monitored in the hospital.
- The location of the tag is communicated through the Bluetooth Gateway to the Prosight platform.
- Visualize the location of the equipment using the Prosight Assets application.
- Leverage powerful analytics to make smart decisions on equipment utilization.
- Optimize operations using PAR level Management.



PAR Level Name	Department	Available	PAR Level Value	Over PAR	Under PAR	PAR Level Status
Balloon Pump (Clear Room)	Pediatrics	10	20	10	10	Under PAR
Balloon Scanner (ICU 1)	Cardiology	16	10	12	8	Under PAR
Blue Resuscitator (ICU)	ICU	25	20	24	20	Under PAR
CO2 Machine (ICU 3)	Cardiology	6	4	6	2	Under PAR
Feeding Pump (Pediatrics 1)	Pediatrics	13	10	14	10	Under PAR
IV Pump (NICU 3)	ICU	25	18	18	14	Over PAR
Ultrasound Machine 1 (ICU 1)	Pediatrics	8	3	4	2	Over PAR
Ultrasound Machine 2 (ICU 1)	Cardiology	4	10	12	8	Over PAR
Ventilator (NICU 3)	ICU	1	6	8	2	Over PAR
Wheeler (NICU 3)	ICU	1	6	8	2	Over PAR
Wheeler (NICU 3)	Pediatrics	17	18	20	12	Under PAR



Get real time visibility into equipment location/status and utilization

INNOVATIVE SOLUTIONS TO TRANSFORM HEALTHCARE ASSET TRACKING:

SMART LOCATIONS:

- Pinpoint equipment in real-time – search by floor, department, asset type, or equipment status.

SMART ORDERING:

- Provide accurate data on equipment usage, reducing redundant purchases and rentals.

SMART ORDERING:

- Utilize accurate, real-time data to better understand equipment utilization; reduce unnecessary equipment purchases and rentals.

SMART ALERTS:

- Send instant notifications when equipment needs to be returned, cleaned, or maintained – from IV pumps to wheelchairs and more.

SMART RULES:

- Create custom business rules based on your facility's operations.



If your organization is using The Joint Commission accreditation process for deemed status purposes, then all medical equipment is required to be included in the written inventory. The written inventory identifies high-risk devices. High-risk medical equipment includes all life support equipment and any other device for which there is a risk of serious injury or death to a patient or staff member should it fail. The term high-risk equipment is equivalent in scope and nature to the CMS term critical equipment.

Maintenance activities and frequencies follow manufacturers' instructions and recommendations for maintaining, inspecting and testing all medical equipment in the inventory. These maintenance activities and frequencies, including an alternative equipment maintenance (AEM) strategy, are documented in writing.

<https://www.jointcommission.org/standards/standard-faqs/critical-access-hospital/environment-of-care-ec/000001244/>