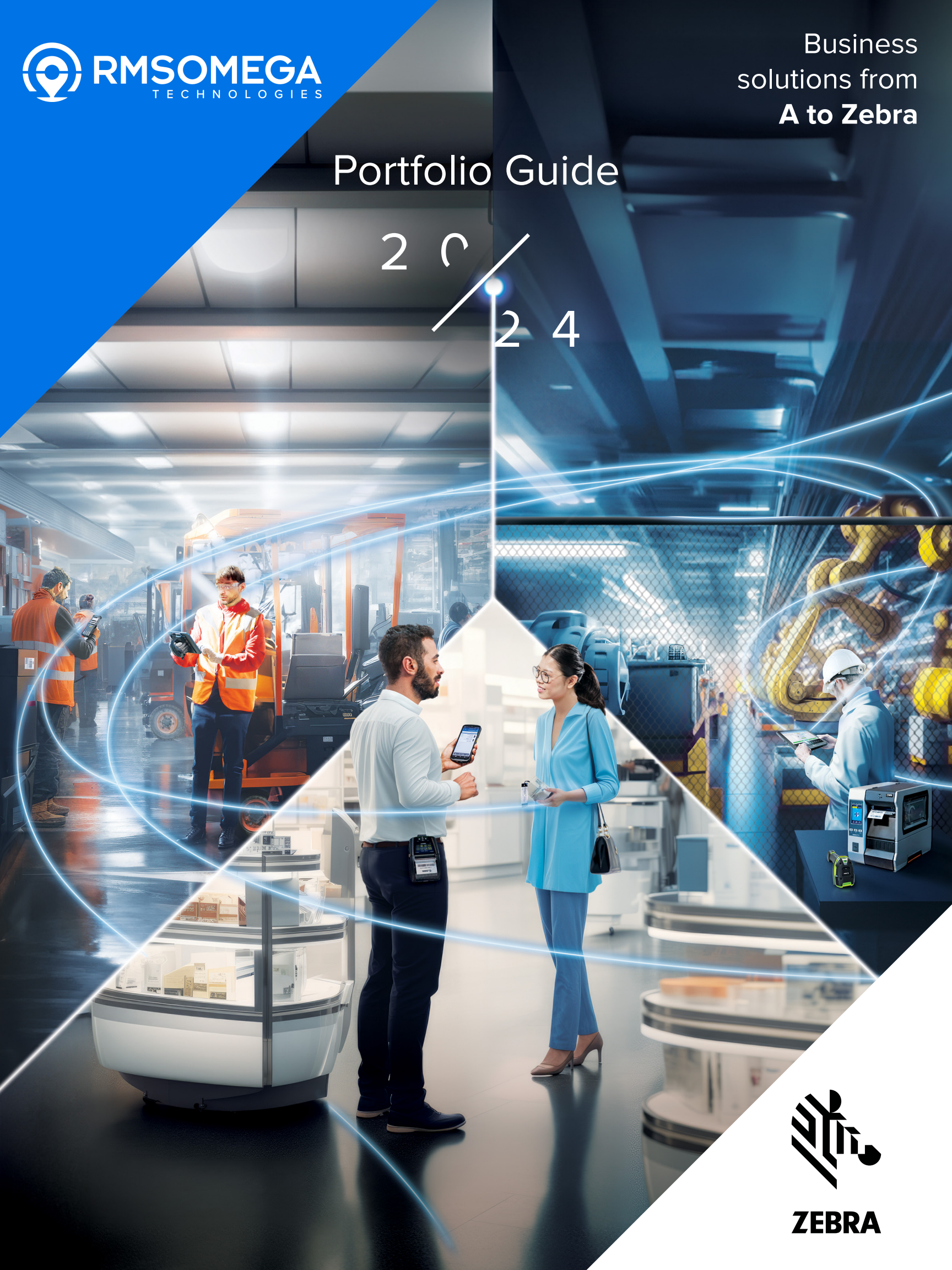
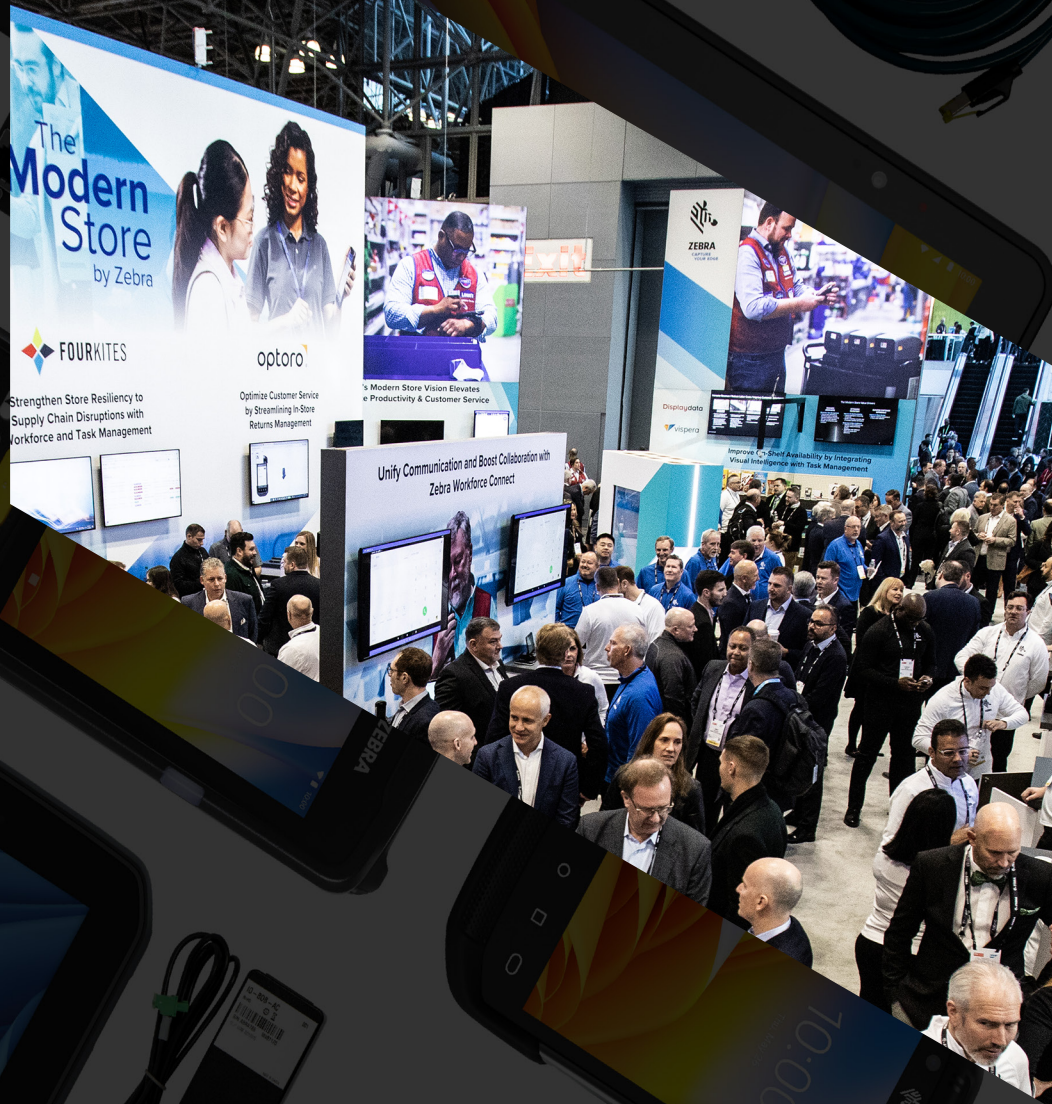


# Portfolio Guide

2 0  
2 4



**ZEBRA**



## YOU THOUGHT YOU KNEW ZEBRA. BUT THERE'S SO MUCH MORE TO SEE.

For more than 50 years, Zebra has delivered innovative solutions and technologies that help organizations manage their inventories and activities—from barcode printers and scanners, to RFID tags and readers, to mobile and wearable computers, to enterprise software and more.

Many of our customers have come to depend on Zebra products for their day-to-day operations and year-to-year success. But even our most loyal champions may not fully appreciate everything Zebra has to offer.

Every business in every industry will find innovations in our portfolio that will help them operate more efficiently and effectively. Products designed to improve visibility and decision-making. Solutions for achieving sustainability and regulatory compliance.

Examine your capabilities today and consider how you want your business to grow—then ask your Zebra representative how we can help you get there. With over 10,000 partners in over 100 countries, we are where you need us to be, equipped with the local knowledge, deep capabilities and industry experience required to deliver real value to your business.





## Handheld RFID Readers and RFID-Enabled Devices

Track, trace and inventory assets in real time. Choose from sleek handhelds, hands-free devices, rugged form factors and RFID sleds. Here are just a few ways to handle RFID easily and accurately.



Watch this video about how an Argentinian medical center uses Zebra's RFID technology to improve staff and patient safety by implementing traceability in the laundry process and asset control.



### RFD90 Ultra-Rugged UHF RFID Sled Relentless. Versatile. Future-proof.

Deliver higher volumes at greater speeds with these ultra-rugged sleds built for the most demanding environments, featuring industry-best read rates and read ranges. Connect directly or wirelessly to Zebra mobile computers and third-party smartphones. Integrated Wi-Fi 6 capability allows easy over-the-air device management.

**INDUSTRY MARKET:**



### Did you know?

Zebra MotionWorks sensors throughout every NFL stadium track RFID tags placed in players' shoulder pads, charting individual movements within inches.



For more information, visit [www.zebra.com](http://www.zebra.com) or contact a sales associate.



### RFD40 RFID Standard Sled

Work more efficiently. Optimize cycle-counting with industry-best read rates, read range and increased battery capacity. Most importantly, it connects to current and future Zebra mobile computers, so you get a future-proof device.

**INDUSTRY MARKET:**



### RFD40 RFID Premium and Premium Plus Sleds

The RFD40 UHF RFID Premium and Premium Plus Sleds build on the same great features of the standard model and offer better support for third-party smartphones by providing a 1D/2D barcode imager,\* Bluetooth and NFC. Integrated Wi-Fi allows for over-the-air device management.

**INDUSTRY MARKET:**



### MC3330xR Series UHF RFID Readers

Bring a new level of comfort, speed, ease of use and accuracy to your RFID applications. Superior RFID read performance and receiver sensitivity enable fast and accurate capture of even the most challenging RFID tags. Built for maximum uptime with a large touchscreen and physical keypad, yet lightweight with the right ergonomics for all-day comfort.

**INDUSTRY MARKET:**



### DS9908R RFID Scanner

Close the supply chain loop. Read RFID-tagged merchandise at the point of sale for up-to-the-minute inventory tracking, or RFID tags on laboratory assets and specimen samples for improved laboratory management. The DS9908R is a hybrid handheld/hands-free scanner that offers best-of-breed barcode scanning with RFID reading capabilities in a single platform.

**INDUSTRY MARKET:**



Learn how a national office furniture and components manufacturer, gained real-time visibility through every stage of its supply chain process with a fully integrated RFID solution to help resolve its operational challenges.



### WS50 RFID Android Wearable Computer

Give your disconnected task workers more tools to complete more types of tasks, boosting collaboration, productivity and workflow efficiency. Worn on the wrist, back of hand or two fingers, this powerful ergonomic device provides an integrated host-free UHF RFID reader, an optional external antenna, a barcode scanner that can capture virtually any barcode in any condition, two-way radio instant push-to-talk capabilities, and more.

**INDUSTRY MARKET:**





### Integrated RFID Portals\*

Manage and monitor inventory, control costs, and optimize workflows with fast, reliable, highly automated updates when tagged assets pass through a portal or chokepoint. Specialized antennas reduce erroneous reads and sustain a highly accurate read rate.



Zebra integrated RFID portals offer unmatched accuracy and interoperability.



**Zebra's integrated** RFID portals were designed with front-line users, workplaces and workflows in mind, engineered for ease of use, reliability and ruggedness.



### Transition RFID Portal\*

#### Reduce manual scanning

Used primarily at dock doors, these integrated portals can reduce the need for human intervention and manual scanning at common chokepoints.

INDUSTRY MARKET:



For more information, visit [www.zebra.com](http://www.zebra.com) or contact a sales associate.



### Wall-Mount RFID Portal\*

#### Fits right in

These fully enclosed, plug-and-play units mount easily beside doorways and hallways near storage rooms, offices and warehouses to provide versatile RFID tracking for multiple applications.

INDUSTRY MARKET:



### Fixed RFID Tunnel\*

#### Improved conveyor throughput

Built especially for inline conveyor operations, these units automatically read tagged assets as they move along the line and through the tunnel, improving workflow accuracy.

INDUSTRY MARKET:



### Integrated RFID Table\*

#### Tabletop accuracy

RFID antennas mounted underneath the table are specially configured to read items placed on the surface in any orientation.

INDUSTRY MARKET:



### Mobile RFID Pallet\*

#### Elevated reading

Ideal for areas with elevated racking and high tag volumes, these pallet-mounted RFID readers are designed to travel through storage aisles by forklift, collecting accurate information quickly and safely.

INDUSTRY MARKET:



Zebra MotionWorks Enterprise RFID Reader Management lets you deploy, configure and monitor a diverse fleet of Zebra fixed RFID readers from one consolidated application, regardless of location.



**Our new** integrated RFID portals will provide organizations with the confidence to know where their assets are any point in time and help increase the accuracy and speed of receiving, put away, consume and resell."

– Matt Seltz  
Vice President of ALT Customer Success, Zebra Technologies



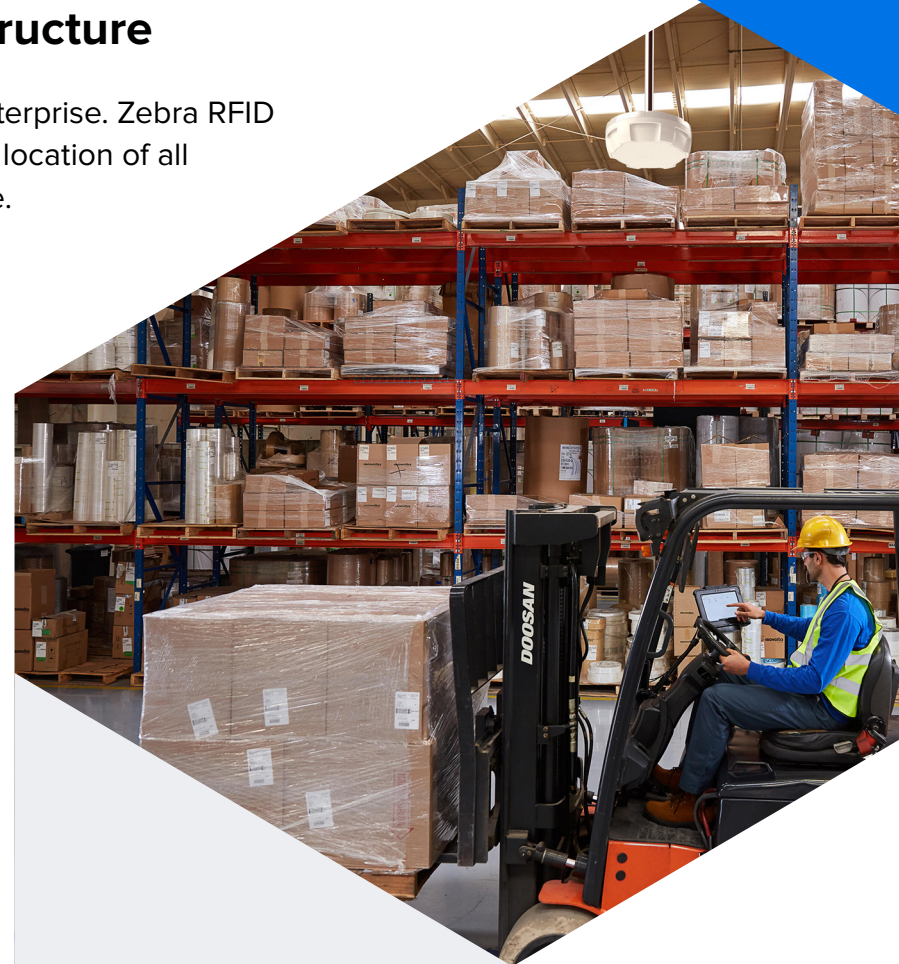


## Fixed RFID Readers and Infrastructure

Achieve maximum asset visibility across your enterprise. Zebra RFID Array Readers provide visibility into the pinpoint location of all your tagged assets, including those on the move.



See how automotive manufacturers can gain operational oversight by using overhead RFID systems to better control their production processes.



### ATR7000 RTLS Reader

**Redefine operational efficiency with superior, affordable real-time locationing using passive RFID.**

See where your inventory, forklifts, equipment, workers and more are located. Know when they're on the move and the direction they're moving. Identify, locate and track items in real time—and receive real-time alerts to improve compliance and loss prevention.

- Proprietary RFID technology
- Wide-angle multi-polarized antenna
- Beam steering for pinpoint accuracy
- Industry-best real-time tracking

**INDUSTRY MARKET:**



**RFID does not require** line-of-sight or a light source for tags to be read, a dramatic advantage over previous technologies, such as barcodes. A reader can discover what's in a box's entire contents without opening it, or pinpoint a specific item in an area containing hundreds of diverse components.



### FX9600 Fixed RFID Reader

Top-of-the-line performance for high-volume and rugged environments.

**INDUSTRY MARKET:**



### FX7500 Fixed RFID Reader

The small enterprise reader, big on speed and accuracy.

**INDUSTRY MARKET:**



### ST5500 Transition RFID Reader\*

Know what's entering and exiting your facility.

**INDUSTRY MARKET:**



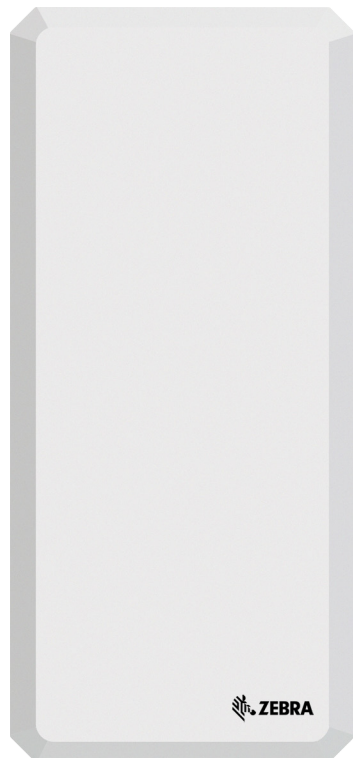
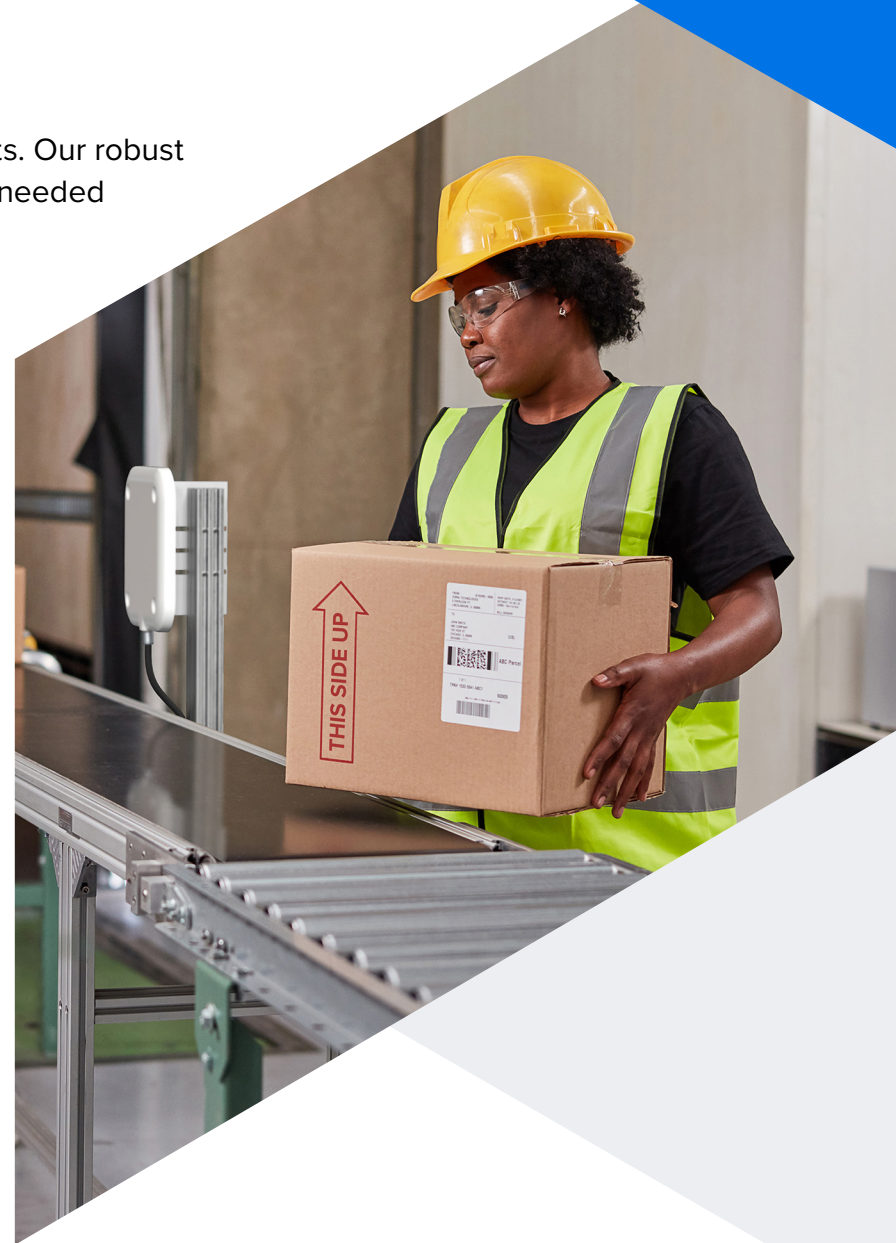


# Antennas

Quickly and accurately track inventory and assets. Our robust antennas offer the high performance and range needed for high traffic and precision.



Read how a manufacturer saved thousands per year with a Zebra RFID system—including antennas that helped them read bins in any orientation, up to 20 feet away.



## AN440 RFID Antenna

### Large area coverage in any environment

Get the capacity and range you demand for reliable RFID tag reading. A good-looking, rugged, general-purpose area antenna, the AN440 is designed to perform exceptionally in all environments, indoors and out.

INDUSTRY MARKET:



**We're rolling** out the RFID system, including Zebra readers and antennas, to all of our facilities in order to improve warehouse and inventory control. When it's all in place, we'll see thousands of dollars in annual savings, and we expect to achieve ROI on the RFID system in less than two years."

— John Underwood,  
Engineering Manager, Southeastern Container



For more information, visit [www.zebra.com](http://www.zebra.com) or contact a sales associate.



### AN510 Ultra-Rugged RFID Antenna

Ultra-rugged and low profile for use indoors and outdoors.

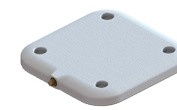
INDUSTRY MARKET:



### SN5604 RFID Reader and Antenna\*

Track inventory and mobile devices.

INDUSTRY MARKET:



### AN520 Ultra-Rugged RFID Antenna

Small form factor and high performance.

INDUSTRY MARKET:



### SP5504 Point of Sale RFID Antenna\*

Track inventory in your POS lanes or will-call areas.

INDUSTRY MARKET:



### AN610 Slimline RFID Antenna

Sleek. Discreet. Rugged.

INDUSTRY MARKET:



### SR5502 Transition Point RFID Antenna\*

Track inventory in the backroom from arrival to departure.

INDUSTRY MARKET:



### AN620 Slimline RFID Antenna

Slimline, ultra-low profile.

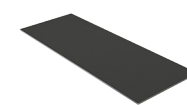
INDUSTRY MARKET:



### AN480 RFID Antenna

Global flexibility for all enterprises.

INDUSTRY MARKET:



### AN650 Ground RFID Antenna

Rugged and ultra-low profile.

INDUSTRY MARKET:



### AN720 RFID Antenna

Compact indoor/outdoor antenna for customer-facing environments.

INDUSTRY MARKET:



\*Not available in all regions.





## Reader Software

You don't have to be an expert to set up and optimize Zebra RFID readers. Our tools help you every step of the way—easily configure and deploy your RFID readers without complications or delays.



Learn how Zebra software makes it easy to deploy and manage fixed RFID readers and other real-time location systems.

### MotionWorks Enterprise RFID Reader Management

The easiest way to deploy, manage and scale passive RFID

Deploy, configure, manage and monitor every cloud-ready Zebra passive RFID reader in your enterprise from a single, consolidated application.



### 123RFID Desktop

Make RFID deployments as easy as 1-2-3

Our free, intuitive wizard presents easy-to-understand options in drop-down menus, radio buttons and sliders. Use built-in help and how-to-videos to find answers to your questions.



### 123RFID Mobile

Get RFID deployment mobility

Leverage 123RFID mobility for more flexible deployment and easier access to our free, intuitive wizard.



### Network Connect

Seamless, secure connections to programmable logic controllers (PLCs)

Connect Zebra FX9600 Fixed RFID Readers to the most widely used Industrial Ethernet protocols and other standard networks without additional conversion hardware.



### Software Development Kits (SDK)

Lower IT burden, easier RFID implementation

Zebra RFID SDKs provide a powerful set of APIs to take full advantage of handheld reader performance, functionality and versatility and offer support for Android, iOS, Windows and Xamarin.



**RFID technology** has reached a tipping point. While barcodes are incredibly useful and as cost-effective as it's possible to be, RFID can be more versatile and efficient in taking automation to the next level. And affordable RFID tags are quickly becoming commonplace at every step of the supply chain."

— John Hughes,  
Director of Software  
Product Management,  
Zebra Technologies





## Location Technologies

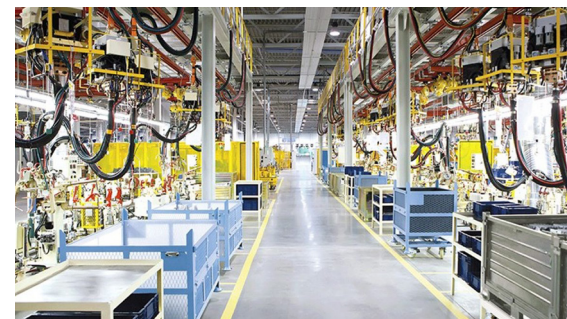
Zebra offers a full portfolio of best-in-class hardware options for capturing location data, to satisfy a large variety of requirements for range, accuracy and precision. Combined with the power of Zebra MotionWorks Enterprise platform, which translates this location data into meaningful insights, Zebra delivers the location expertise you need to maximize the benefits of real-time tracking in your organization.



Read this case study about how Zebra Technologies enabled Bimbo Bakeries USA to revolutionize their supply chain.

### Ultra-Wideband Solutions

Zebra delivers real-time visibility with Ultra-Wideband (UWB) solutions—a real-time location system (RTLS) that allows for a myriad of asset management applications. Accurately track personnel and equipment indoors and out. The UWB system provides the lowest cost-of-ownership in the industry by improving installation ease, visibility, scalability, performance, asset tracking and tag management.



### WhereNet

The WhereNet RTLS provides the longest-range RTLS capabilities and performance in all environments, including complex and hazardous ones. WhereNet's long tag-to-sensor range allows you to have real-time visibility and status information on your assets with a cost-effective RTLS network infrastructure.

### Bluetooth Low Energy Devices

Our Bluetooth beacons and bridges are quickly and easily deployed, available in multiple form factors and price points, and can be used for asset tracking and other location solutions.



### Hyperconnected

distribution centers are the new reality. Zebra's recent vision study found that **43%** of organizations plan to implement real-time location systems (RTLS), enabled in part by RFID tagging and Bluetooth technology like beacons. These systems give distribution center managers a bird's-eye view of operations, allowing for real-time cross-checking of an asset's location.







## Zebra MotionWorks

When you can track everything—and put insights derived from real-time data immediately to work—you can accomplish anything. Automating visibility to your critical assets allows you to ramp up productivity, boost efficiency and grow your business—by delineating data that arms your enterprise with actionable insights.

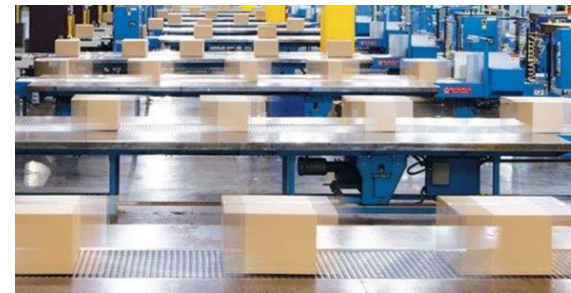


Read this case study about a partnership between Zebra and Toyota Material Handling, using MotionWorks Enterprise to maximize efficiency.

### Zebra MotionWorks Enterprise™

Turn the location of enterprise assets into actionable business insights

Zebra MotionWorks Enterprise is a comprehensive software suite designed to help IT and operations managers deploy, configure and manage a population of sensors and readers, gather data from them, and obtain meaningful information from that data.



### Zebra MotionWorks Sport™\*

Seeing all facets of this field and yours

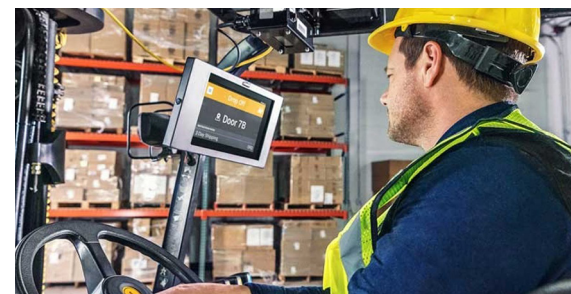
Use real-time performance statistics to scout for players and create winning strategies.

- Optimize athlete performance by helping trainers keep athletes at peak performance
- Strengthen coaching and training with a consistent, data-forward analysis method
- Engage fans by broadcasting player statistics on television, mobile engagement and in stadiums



### Zebra MotionWorks Signature Services\*

Accelerate the deployment of your MotionWorks location solution. Ensure proper design, architecture and integration with legacy IT systems and user adoption.



By automating root-cause analysis of workflow disruptions, MotionWorks Enterprise empowers Toyota Material Handling's staff to focus on more high-level responsibilities. The company's long-term vision includes expanding its use of MotionWorks Enterprise for production, parts delivery and distribution to optimize the tracking and tracing of its entire value stream.



